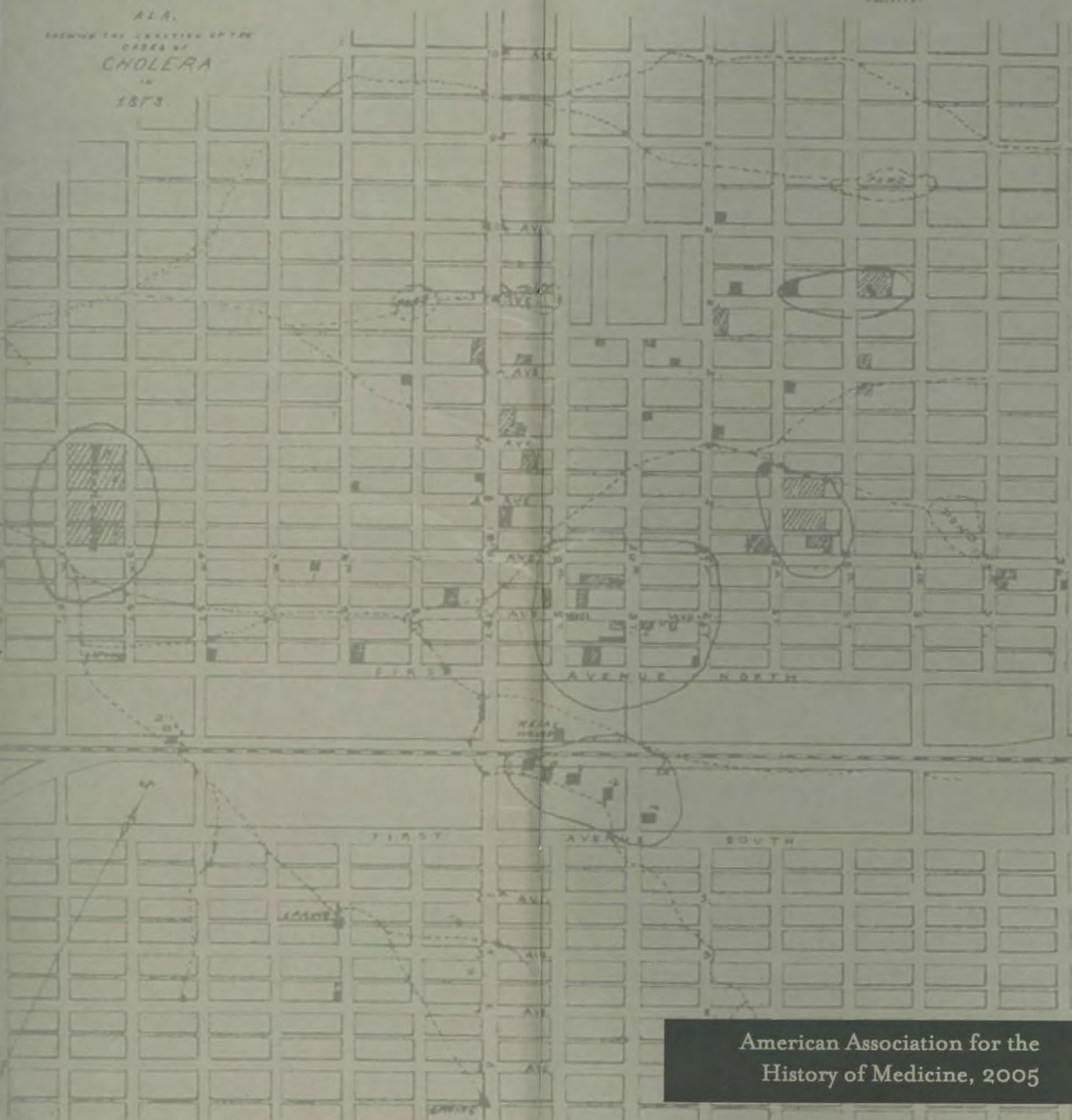


MAP  
OF PART OF THE CITY OF  
BIRMINGHAM

AL.A.  
SHOWING THE LOCATION OF THE  
CASES OF  
CHOLERA  
IN  
1873.

The houses in this case  
have small red circles on them  
marked 1-11



AMERICAN ASSOCIATION  
FOR THE  
HISTORY OF MEDICINE

APRIL 7 - 10, 2005  
BIRMINGHAM, ALABAMA

Table of Contents

Acknowledgements .....	2
2004 Meeting Committees .....	3
Essential Information .....	4-5
AAHM Program Sessions .....	6-26
Sheraton Center Maps .....	28-30
AAHM Officers .....	31
AAHM Council .....	32
AAHM Participants .....	33-47
Affiliated Societies' Schedules .....	48-51
Future AAHM Meetings .....	52
Advertisements .....	53-57
Notes .....	58-60

COVER:

Map of Birmingham, Alabama from *Cholera Epidemic of 1873 in the United States. The Introduction of Epidemic Cholera Through the Agency of the Mercantile Marine: Suggestions of Measures of Prevention*. Washington: Government Printing Office, 1875. (pp. 409-414). Included in this work is a section on the cholera epidemic, which ravaged and nearly destroyed the young city of Birmingham in 1873, along with this map, which has been described as "one of the earliest published maps of this city." The author of the article, Mortimer H. Jordan (1844-1889) was secretary of the Jefferson County Medical Society of Birmingham, Alabama in 1873 (during the epidemic) and later president of the Medical Association of the State of Alabama (1884-1885).  
Courtesy of Reynolds Historical Library.  
UAB Historical Collections.

## INSTITUTIONAL SPONSORS

University of Alabama  
School of Medicine

Lister Hill Library,  
University of Alabama at  
Birmingham

## CORPORATE SPONSOR

EBSCO Industries, Inc.



University Hospital staff receive training for the iron lung, Birmingham, circa 1959.

## LOCAL ARRANGEMENTS COMMITTEE

Michael A. Flannery, co-chair  
Tim L. Pennycuff, co-chair  
Jonathan Erlen  
H. Hughes Evans  
Thomas Huddle  
James A. Pittman, Jr.  
Stefanie Rookis  
Bill Weaver



Arnold of Villanova. Regimen sanitatis ad regem Aragonum. Latin ms. on vellum. Italy, 14th century.

## PROGRAM COMMITTEE

Walton O. Schalick III, chair  
Jeffrey P. Brosco  
H. Hughes Evans  
Bert Hansen  
Richard C. Keller  
Conevery Bolton Valencius  
Philip K. Wilson

## CONFERENCE LOCATION

Sheraton Birmingham  
2101 Richard Arrington Jr.  
Boulevard North  
Birmingham, Alabama 35203  
p: 205.324.5000 f: 205.307.3085  
toll free: 1.800.325.3535

Check In 3:00pm  
Check Out 12:00pm

### *Hotel Map in Center*

## ESSENTIAL INFORMATION

The opening reception, all sessions, breakfasts, and luncheons will be held at the Sheraton Birmingham and the Medical Forum. The Fielding H. Garrison Lecture and Reception will be held at the Sixteenth Street Baptist Church and the Birmingham Civil Rights Institute (BCRI).

The Banquet and Awards Ceremony will be held at the Sheraton Birmingham.

Bus transportation from the Sheraton to the Garrison will be provided.

All illustrations courtesy of Historical Collections, Lister Hill Library of the Health Sciences, the University of Alabama at Birmingham.

## REGISTRATION

Thursday, April 7  
1:00 - 5:00pm

Friday, April 8  
8:00am - 5:00pm

Saturday, April 9  
8:00am - 4:00pm

All held in Medical Forum, 2nd floor

## BOOK EXHIBIT

Thursday, April 7  
2:00 - 5:00pm

Friday, April 8  
9:00am - 5:00pm

Saturday, April 9  
9:00am - 5:00pm

All held in Medical Forum A, 2nd floor

## ADMITTANCE

Only registered participants wearing name badges will be admitted to the AAHM sessions, receptions, and the Book Exhibit. Tickets are required for breakfasts, luncheon sessions, and the Annual Awards Dinner.

All information in the program appears as we received it. Every attempt was made to ensure its accuracy. We regret any errors or omissions.

AMERICAN ASSOCIATION  
FOR THE  
HISTORY OF MEDICINE  
2005 MEETING

THURSDAY, APRIL 7

Registration

1:00 - 5:00pm

Medical Forum, 2nd floor

Book Exhibit

2:00 - 5:00pm

Medical Forum A, 2nd floor

AAHM Council Meeting

2:00 - 6:30pm

Medical Forum G, 3rd floor

Opening Reception

7:00 - 9:00pm

Birmingham Ballroom Prefunction

Gretchen Worden Memorial

9:15 - 10:15pm

Birmingham Ballroom IX

See Affiliated Societies' Schedules on  
pages 48-51

FRIDAY, APRIL 8

Continental Breakfast

7:00 - 8:00am

President's Breakfast for New Members

7:00 - 8:15am

Medical Forum G, 3rd floor

Registration

8:00am - 5:00pm

Medical Forum, 2nd floor

Book Exhibit

9:00am - 5:00pm

Medical Forum A, 2nd floor

Welcome and Introduction

Jacalyn M. Duffin, President, Presiding

8:00 - 8:20am

Birmingham Ballroom III

Three Concurrent Sessions

8:30 - 10:00am

Session I

Medical Forum C, 2nd floor

MEDICINE IN SOUTH AMERICA

*Bless the Pill: How the Catholic Church  
Promoted Oral Contraceptives in Peru,  
1965-1985*

Raul Necochea

*Russia from the Inside, Uruguay from the  
Outside*

Anne-Emanuelle Birn

*The Resilience of Medical Research in an Anti-Intellectual Climate*

Jonathan Hagood

Chair: Marcos Cueto

**Session 2**

**Birmingham Ballroom IX**

**HISTORICAL PATHS TO  
CHRONIC DISEASE EPIDEMIOLOGY**

*Organic Etiology of Psychiatric Disorders in Historical Perspective*

Howard I. Kushner

*Profiling Risk: Cohort Research and the Emergence of Coronary Heart Disease Epidemiology*

Gerald M. Oppenheimer

*The Etiology of Lung Cancer: The Struggle between the New Chronic Disease Epidemiology and the Scientific Advisory Board to the Tobacco Industry Research Committee, 1954-1964*

Colin L. Talley

Chair: Arleen Tuchman

**Session 3**

**Birmingham Ballroom I**

**FRENCH MEDICINE  
AT HOME AND ABROAD**

*A Louse, Divided: Contrasting Styles of Bacteriological Demonstration in French North Africa, 1906-1922*

Kim Pelis

*The Experimental Logic of Philippe Ricord's 'New Doctrine' of the Venereal Diseases*

Alex Dracobly

*The Failure of a Best-Seller: Two Editions of Philippe Pinel's Treatise on Mental Alienation, 1809 v 1800*

Dora B. Weiner

Chair: George Weisz

Break

10:00 - 10:30am

Three Concurrent Sessions

10:30am - 12:00pm

**Session 4**

**Medical Forum C, 2nd floor  
ENVIRONMENTS OF DISEASE**

*Environment and Disease in Philadelphia, 1690-1805: A Health Crisis Revisited*  
Gilda M. Anroman

*Southern Exposure: UV Radiation Technologies in the Operating Theater and Post-Operative Infection Rates at Duke University Medical School, 1936-1966*

Gerard J. Fitzgerald

*Strangers' Disease: The Reconstruction of Yellow Fever in Charleston, South Carolina, 1699-1820*  
Peter McCandless

Chair: David Rosner

**Session 5**

**Birmingham Ballroom IX**

**THE PROFESSIONAL ESTABLISHMENT**

*Resident Ironies: Graduate Medical  
Education and Health Care Policy,  
1944-1965*

Jennifer L. Gunn

*'Where Does Hematology End and  
Oncology Begin?': Questions of  
Professional Boundaries and Medical  
Authority*

Gretchen M. Krueger

*'A Plain and Temperate Diet':  
Vegetarianism and Orthodox Medical  
Practitioners in the 1820s and 1830s*

Margaret Puskar-Pasewicz

Chair: Kenneth M. Ludmerer

**Session 6**

**Birmingham Ballroom I**

**SEXING MEDICINE**

*Clothing Makes the Man (Or Woman):  
Medicine, Intersexuality, and the  
Importance of Dressing the Part,  
1925-1955*

Sarah B. Webber

*Medicine, Androgyny, and Race*

Patrick Warren

*The 'Sexed' Treatment of Female Patients  
in Early Modern British Medicine,  
circa 1590-1740*

Wendy D. Churchill

Chair: Ellen Singer More

**Luncheon Sessions I**

12:15 - 1:45pm

**Workshop A**

**Birmingham Ballroom XI**

*Medical History and Medical Professionalism*

Chester R. Burns, James Mohr,

P. Preston Reynolds, and

Rosemary Stevens

**Workshop B**

**Birmingham Ballroom XII**

*The Medical Movies on DVD Project*

David Cantor, Michael Sappol, and

Paul Theerman

Three Concurrent Sessions

2:00 - 3:30pm

**Session 7**

**Birmingham Ballroom IX**

**IT PAYS TO BELIEVE:**

**MEDIGINE AND FAITH**

*Christian Materialism: Religion and the  
Re-conceptualization of Mind as a  
Function of the Brain in Early  
Nineteenth-Century Britain*

Elfed Huw Price

*'Advance Guards of the Health Army':  
The Bureau of Nursing Service for New  
York City's Association for Improving the  
Conditions of the Poor, 1900-1940*  
Cynthia A. Connolly

*Medical Fideism in the Inquisition's  
Prosecution of False Visionaries in  
Seventeenth-Century Spain*  
Andrew W. Keitt

Chair: Ronald L. Numbers

**Session 8**  
**Birmingham Ballroom I**  
**MEDICAL POLITY**

*Medical Ecology and the Japanese  
Empire: Political and Ethical  
Implications*  
Ruth Rogaski

*Politics, Policy and the Measuring of  
Child Health*  
Richard A. Meckel

*'The public health miracle': Public  
Health Policy in American Occupied  
Germany, 1945-1949*  
Dagmar U. Ellerbrock

Chair: Keith Wailoo

**Session 9**  
**Medical Forum C, 2nd floor**  
**WOMEN AND MEDICINE ABROAD**

*The Menstrual Cycle as a 'Measure of  
Man': Colonial Midwifery, Race and  
Gender in Colonial India, 1840s-90s*  
Ishita Pande

*Women at War: Dr. Clara Maude  
Nasmyth – One of a Group of British-  
Trained Women Physicians Who Set up  
Field Hospitals in Serbia During WWI*  
Marianne P. Fedunkiw

*'Punjab Pioneer': Edith Brown and the  
North India School of Medicine for  
Christian Women*  
Maneesha Lal

Chair: Judith Leavitt

Break  
3:30 – 4:00pm

Three Concurrent Sessions  
4:00 – 5:30pm

**Session 10**  
**Birmingham Ballroom I**  
**EARLY MODERN MEDICINE  
IN PRACTICE AND THEORY**

*Medical Treatment for Convicted  
Criminals and Prisoners of War in the  
Ottoman Navy in the Early Modern  
Period*  
Miri Shefer

*The Limits of Iatromechanism: Baglivi  
versus Boerhaave*  
Adrian F. Wilson



*William Harvey and Morbid Anatomy at Padua*

Jonathan G. Bateson

Chair: Brian Nance

**Session II**

**Medical Forum C, 2nd floor**

**SELF-PERCEPTIONS OF  
DISABILITY AND ILLNESS**

*Arguing Disability: Veterans' Stories in Early Modern England*

Geoffrey L. Hudson

*Escaping from Idiocy: Self-identification of People with Intellectual Disabilities at the Orillia Asylum, 1900-1935*

Jessa Chupik

*The Debt of Service: Work, Welfare and Incapacity in Early Modern Hesse, Germany*

Louise Gray

Chair: Beth Linker

**Session I2**

**Birmingham Ballroom IX**

**SEX AND THE TABOO**

*Public vs. Private: The Strange Career of a Gay Psychiatrist in the 1930s*

Naoko Wake

*Sex and the Citizen: Doctors, Reproductive Manuals, and Fashionable Readers under the Napoleonic Consulate and Empire, 1799-1815*

Sean M. Quinlan

*'Wife a Man': Transsexuality, the April Ashley Divorce Trial and the Medico-legal Definition of Sex in Post-war Britain*

Dan O'Connor

Chair: Dorothy Porter

Buses depart Sheraton

6:00 - 6:15pm

**FIELDING H. GARRISON LECTURE**

**6:30 - 7:30pm**

**Sixteenth Street Baptist Church**

*De Kruif's Boast: Vaccine Development and the Construction of a Virus*

John M. Eyler

University of Minnesota

Reception

7:30 - 9:30pm

Birmingham Civil Rights Institute

Buses begin return to Sheraton

8:30pm

Open Meeting of the  
History of Psychiatry Interest Group

9:00 - 10:00pm

Medical Forum H, 3rd floor

## SATURDAY, APRIL 9

Continental Breakfast

7:00 - 8:15am

Women Historians' Breakfast

7:00 - 8:15am

Medical Forum G, 3rd floor

Clinician Historians' Breakfast

7:00 - 8:15am

Medical Forum H, 3rd floor

Graduate Medical Student Breakfast

7:15 - 8:15am

Medical Forum I, 3rd floor

Registration

8:00am - 4:00pm

Medical Forum, 2nd floor

Book Exhibit

9:00am - 5:00pm

Medical Forum A, 2nd floor

Three Concurrent Sessions

8:30 - 10:00am

### Session 13

#### Birmingham Ballroom IX

#### FINDING THE CANCER AND TREATING IT

*An Early Experiment with Gynecological  
Cancer Screening: Catharine  
Macfarlane's Philadelphia Clinic,  
1938-1953*

Stacey L. Randall

*Cycles of Hope and Despair: The  
Treatment of Lung Cancer in Britain,  
circa 1940-1990*

Carsten Timmermann

*Uncertainty and Experience: British  
Women and Breast Cancer Treatment,  
1945-1975*

Elizabeth Toon

Chair: Barron Lerner

### Session 14

#### Birmingham Ballroom I

#### BIRTHING KNOWLEDGE

*From Population Control to Women's  
Health: A Revolution in Reproductive  
Health Services, 1960-1975*

Jennifer A. Nelson

*Reexamining the Pelvic: The  
Doctor-Patient Relationship and the  
Pelvic Instruction Controversy of the  
1970s*

Wendy Kline

*'A Boon for the Barren Woman': John  
Rock's Human In Vitro Fertilization  
Research at the Free Hospital for Women,  
1938-1944*

Margaret Marsh and Wanda Ronner

Chair: Elizabeth Watkins

### Session 15

#### Medical Forum C, 2nd floor

#### THE 'OTHER' BODY

*Doctors and Freaks: British Teratology, Professionalism, and Popular Culture*  
Heather McHold

*The Lonesome Death of Hoo Loo: English Surgery and Chinese Identity in the 1830s*  
Stephen Rachman

*'To Solve the Mystery of Their Union': The 19th Century Medical Quest for Unusual Bodies*  
Sarah Mitchell

Chair: Daniel Wilson

Break  
10:00 – 10:30am

Three Concurrent Sessions  
10:30 – 12:00pm

**Session 16**  
**Birmingham Ballroom IX**  
**EARLY AMERICAN MEDICINE**

*Humane Societies and the Cultural Significance of Suicide in America, 1760-1830*  
Richard J. Bell

*Paracelsus among the Yankees: The Theoretical Background of George De Benneville's Pennsylvania Medicine*  
Jole R. Shackelford

*'Samson of Medicine': Benjamin Rush and the Medicinal Uses of Mercury*  
Michael Egan

Chair: Maarten Ultee

**Session 17**  
**Birmingham Ballroom I**  
**MEDIEVAL MEDICINE**  
**ALONG THE SILK ROAD**

*Healing Pilgrimages to Christian Religious Shrines in the eastern Mediterranean at the time of the Crusades*  
Piers D. Mitchell

*Medieval Plague Tracts: A Survey in Progress*  
Christiane Nockels

*The Human Body in the History of Medicine in Tibet*  
Frances Garrett

Chair: Florence Eliza Glaze

**Session 18**  
**Medical Forum C, 2nd floor**  
**THE AUTHORITY OF DISABILITY**

*A Clinical v. a Public Health Model for the Care of Mental Patients after World War II: A Social Experiment*  
John Burnham

*From the State's Body to the Body's State:  
The Invention of Disability in  
World War I Germany*  
Heather R. Perry

*Old Age and Disability in Early Modern  
England*  
Samuel S. Thomas

Chair: Alice Bullard

**Luncheon Sessions II**

12:15 – 1:45pm

**Workshop C  
Birmingham Ballroom XI**

*HIPAA for Historians*  
Beatrix Hoffman, Steve Novak,  
Heather Munro Prescott, Janet Golden,  
and Joel Braslow

**Workshop D  
Birmingham Ballroom XII**

*Integrating History of Medicine and  
Health into the Undergraduate  
Curriculum*  
Charlotte G. Borst, Jonathan Erlen,  
Kathleen W. Jones, and Janet A. Tighe

Three Concurrent Sessions  
2:00 – 3:30pm

**Session 19  
Birmingham Ballroom I  
AN INFECTIOUS RESPONSE**

*Invisible Demons: The Impact of the  
1870-71 Smallpox Epidemic on the  
Plains Cree*  
Rebecca Lee Barbara Brain

*'A Trying Ordeal at Best': Public  
Perceptions of the Hazards of Vaccination  
in 1901-1902*  
Karen L. Walloch

*'Play(gue)grounds of London':  
Hampstead, the Heath, and the Hospital*  
Matthew Newsom Kerr

Chair: David Jones

**Session 20  
Medical Forum C, 2nd floor  
POLITICS OF VISUAL AIDS IN  
NINETEENTH-CENTURY ANATOMY**

*Cultures of Display: Models and other  
Visual Media in Scandinavian Medical  
Museums*  
Eva Ahren Snickare

*'It is much easier to teach from copper-  
plates and ... models ..., than to dirty  
one's hands with human flesh': Anatomy  
teaching, visual aids and the changing  
setting of the Vienna School of Medicine,  
1848-1900*  
Tatjana Buklijas

*'The proletariat can find in my  
preparations protection for their  
corpses': Modelers' Strategies and  
Medical Authority*  
Nick D. Hopwood

Chair: John Harley Warner

**Session 21**  
**Birmingham Ballroom IX**  
**THE BODY ETHIC**

*Human Experimentation and the  
Difficulties of Ethical Closure:  
A Case Study in Post-World War II  
Radiation Studies*  
Gerald Kutcher

*The Atomic Negro: Burn Research  
during the Cold War*  
Susan E. Lederer

*'Measuring the Negroes': Eugenic  
Anthropometry at the Tuskegee Institute,  
1932-1944*  
Paul A. Lombardo

Chair: Gary Belkin

Break  
3:30 - 4:00pm

AAHM Business Meeting  
4:00 - 5:15pm  
Birmingham Ballroom III

Reception  
6:30 - 7:00pm  
Birmingham Ballroom Prefunction

Banquet and Awards Ceremony  
7:00 - 9:30pm  
Birmingham Ballroom IV

**SUNDAY, APRIL 10**

Continental Breakfast  
7:45 - 8:45am

Post-Mortem Breakfast  
7:30 - 8:45am  
Medical Forum C, 2nd floor

Three Concurrent Sessions  
9:00 - 10:30am

**Session 22**  
**Medical Forum A, 2nd floor**  
**LEGITIMIZATION, BLAME,  
AND THE PROFESSION**

*Lofty Ideals and Professional  
Pragmatism: The 'good physician' in  
Historical and Contemporary Ayurveda*  
Dagmar Benner

*Screening Sun, Reducing Risk:  
Sunscreen and Skin Cancer Prevention,  
1959-1978*  
Sally D. Romano

*'A Mine of Health': Literacy, Secularism  
and the Society of African Herbalists in  
Colonial Gold Coast, 1930-1950*  
Abena Dove Osseo-Asare

Chair: Randall Packard

**Session 23**  
**Medical Forum B, 2nd floor**  
**ON THE MEDIA I**

*Give Us Health, Give Us Work,  
Give Us Life*  
John Anthony Tercier

*Patient Images in a Modernizing Society:  
The Netherlands, 1880-1920*  
Frank G. Huisman

'The most extraordinary programme ever  
shown on television': *Heart  
Transplantation and the Transformation  
of Medical Communication in Britain,  
1968*  
Ayesha Nathoo

Chair: Ann Carmichael

**Session 24**  
**Medical Forum G, 3rd floor**  
**TESTING THE LIMITS**

*Testing Pain as a Technology of  
Innovation: Therapeutic Evaluation,  
Analgesic Development and the  
Committee on Drug Addiction,  
1929-1965*  
Noemi R. Tousignant

*Whose Revolution? LSD and  
Medical Authority*  
Erika Dyck

*'Race,' Technology, and Asbestos Related  
Disease: The Case of Lung Function  
Testing*  
Lundy Braun and Sophie Kisting

Chair: Marcia Meldrum

Break  
10:30 - 11:00am

Three Concurrent Sessions  
11:00am - 12:30pm

**Session 25**  
**Medical Forum G, 3rd floor**  
**REFINING THE MEDICAL GAZE**

*The Debate on Obstetrical Education in  
the Early Twentieth Century: Obstetrical  
Specialists or General Practitioners?*  
Naoko Ono

*The Development of Supportive Care in  
the Treatment of Children with Cancer,  
1930 to the Present*  
Robin Rohrer

'A New Species of Trouble': *Risk, Public  
Health and the Love Canal Disaster*  
Amy M. Hay

Chair: Russell Maulitz

**Session 26**  
**Medical Forum A, 2nd floor**  
**LEGALIZING MEDICINE**

*English Medical Expertise and Foreign  
Courtrooms, 1910-1985*  
Elisabeth A. Cawthon

*Forensic Medicine and the Early Modern  
English Coroner's Inquest*  
Carol Loar

*Idiocy in Early Virginia: A Classification of Convenience*

Parnel Wickham

Chair: James Mohr

**Session 27**

**Medical Forum B, 2nd floor**

**ON THE MEDIA II**

*Black Medical Practice and the Journal of the National Medical Association*

Gretchen Long

*Great Moments: Lessons From the Early "History" of Pharmaceutical*

Advertising

Jonathan M. Metz

*Psychiatry Goes to the Movies: Family Therapy and Popular Culture in Postwar America*

Debbie Weinstein

Chair: Christopher Crenner



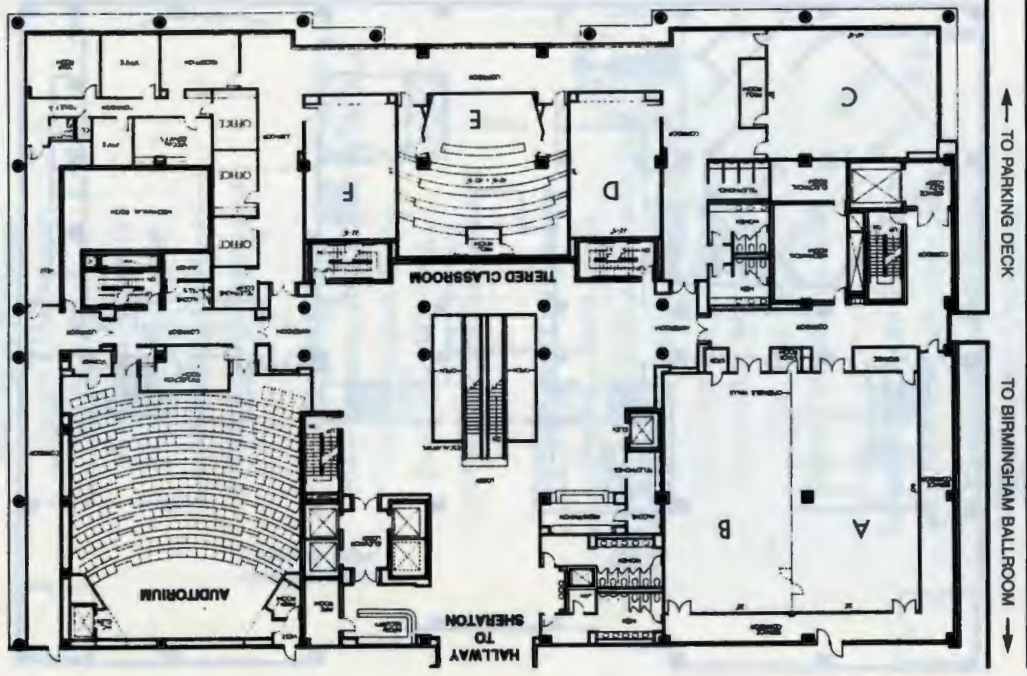
National Pharmacy Week celebrated at the East End Apothecary in Birmingham, circa 1940s.



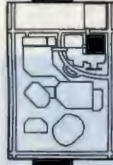
Patent Medicine Trade Card, 19th century.



**MEDICAL FORUM  
CONFERENCE CENTER**  
SECOND FLOOR



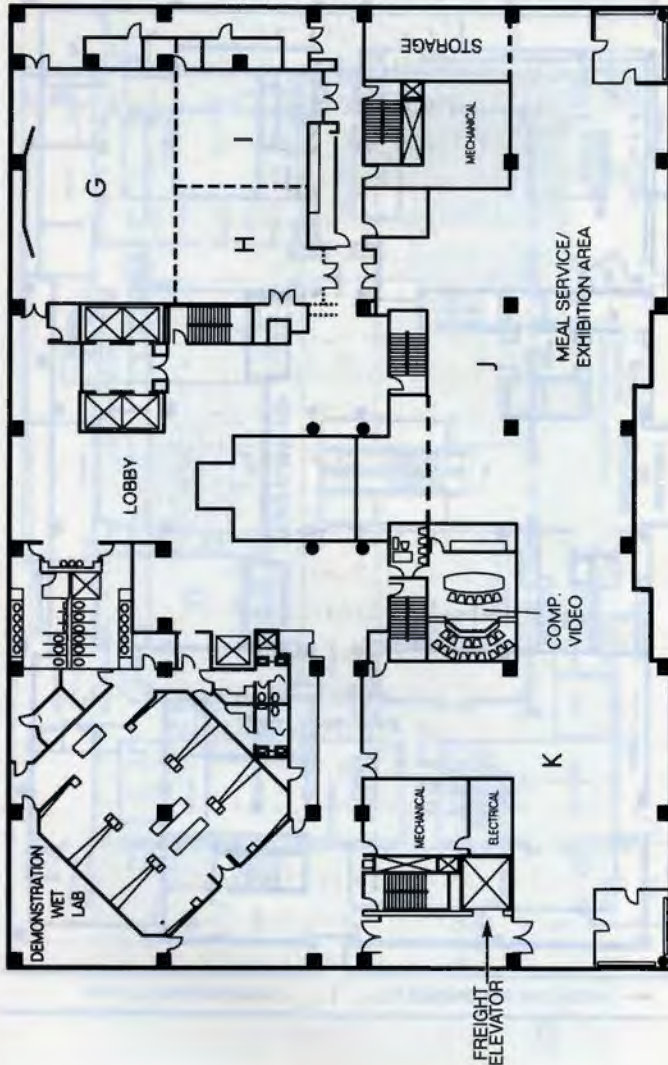
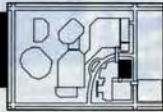
**BIRMINGHAM BALLROOM**







**MEDICAL FORUM  
CONFERENCE CENTER  
THIRD FLOOR**



## AAHM OFFICERS

2004 - 2005

### PRESIDENT

Jacalyn M. Duffin, MD, PhD  
History of Medicine  
Queen's University  
78 Barrie Street  
Kingston, Ontario  
Canada K7L 3N6  
613.533.6580  
duffinj@post.queensu.ca

### VICE PRESIDENT

John Parascandola, PhD  
11503 Patapsco Drive  
Rockville, MD 20852  
jparascandola@comcast.net

### SECRETARY/TREASURER

Todd L. Savitt, PhD  
Department of Medical Humanities  
Brody School of Medicine at  
East Carolina University  
Greenville, NC 27834  
252.744.2797  
savittT@mail.ecu.edu

### IMMEDIATE PAST PRESIDENT

Kenneth M. Ludmerer, MD  
Department of Medicine  
Washington University  
660 South Euclid Avenue  
Box 8066  
St Louis, MO 63110  
314.362.8073  
kludmere@im.wustl.edu

## AAHM COUNCIL

2004 - 2005

### TERM EXPIRES 2005

Christopher Grenner  
Caroline Hannaway  
Michael R. McVaugh  
Christopher Sellers

### TERM EXPIRES 2006

Thomas A. Horrocks  
James C. Mohr  
Walton O. Schalick, III  
Janet A. Tighe

### TERM EXPIRES 2007

Michael Bliss  
John Eyler  
Margaret Humphreys  
Ann Laberge



Jo Ann Hyatt, assistant instructor of nursing, examines the rare books contained in the Reynolds Historical Library, 1958.

## AAHM PARTICIPANTS

Gilda M. Anroman  
PhD Candidate  
University of Maryland

Jonathan G. Bateson  
DPhil Candidate  
University of Oxford

Gary Belkin, MD, PhD  
Assistant Professor  
New York University

Richard J. Bell  
PhD Candidate  
Harvard University

Dagmar Benner, MA  
Research Assistant  
Cambridge University

Anne-Emanuelle Birn, MA, ScD  
Canada Research Chair in  
International Health  
University of Toronto

Charlotte G. Borst, PhD  
Dean, Arts and Sciences and  
Professor of History  
Union College

Rebecca Lee Barbara Brain, MA  
PhD Candidate  
University of Saskatchewan

Joel Braslow, MD, PhD  
Associate Professor  
University of California-Los Angeles

Lundy Braun, PhD  
Associate Professor  
Brown University

Jeffrey Brosco, MD, PhD  
Associate Professor  
University of Miami

Tatjana Buklijas, MD  
Research Fellow  
University of Cambridge

Alice Bullard, PhD  
Associate Professor  
Georgia Institute of Technology

John Burnham, PhD  
Research Professor  
Ohio State University

Chester R. Burns, MD, PhD  
James Wade Rockwell Professor  
University of Texas, Galveston

David Cantor, PhD  
Historian  
National Library of Medicine

Ann Carmichael, MD, PhD  
Associate Professor  
Indiana University

Elisabeth A. Cawthon, PhD  
Associate Professor  
University of Texas at Arlington

Jessa Chupik, BA, MA  
PhD Candidate  
McMaster University

Wendy D. Churchill, BA (Hons), MA  
PhD Candidate  
McMaster University

Cynthia A. Connolly, RN, PhD, PNP  
Assistant Professor  
Yale University

Christopher Crenner, MD, PhD  
Assistant Professor  
University of Kansas

Marcos Cueto, PhD  
Professor  
Universidad Peruana Cayetano Heredia

Alex Dracobly, PhD  
Adjunct Assistant Professor of Medicine  
University of Oregon

Jacalyn M. Duffin, MD, PhD  
Hannah Chair  
Queen's University

Erika Dyck  
Doctoral Student  
McMaster University

Michael Egan, PhD  
John C. Haas Research Fellow  
Chemical Heritage Foundation

Dagmar U. Ellerbrock, PhD  
Research Assistant  
Cambridge University

Jonathan Erlen, PhD  
Assistant Professor  
University of Pittsburgh

H. Hughes Evans, MD, PhD  
Associate Professor  
University of Alabama at Birmingham

John M. Eyler, PhD  
Professor  
University of Minnesota

Marianne P. Fedunski, PhD  
Visiting Scholar  
Universities of Oxford/Toronto

Gerard J. Fitzgerald, MS, PhD  
Postdoctoral Fellow  
Dibner Institute for the History of  
Science and Technology

Michael A. Flannery, MA, MLS  
Associate Professor  
University of Alabama at Birmingham

Frances Garrett, PhD  
Assistant Professor  
University of Toronto

Florence Eliza Glaze, PhD  
Assistant Professor  
Coastal Carolina University

Janet Golden, PhD  
Associate Professor  
Rutgers University

Louise Gray, MA, PhD  
Research Fellow  
The Wellcome Trust Centre  
for the History of Medicine at  
University College London

Jennifer L. Gunn, PhD  
Assistant Professor  
University of Minnesota

Jonathan D. Hagood  
PhD Candidate  
University of California, Davis

Bert Hansen, PhD  
Associate Professor  
Baruch College-City University of New York

Amy M. Hay  
PhD Candidate  
Michigan State University

Beatrix Hoffman, PhD  
Associate Professor  
Northern Illinois University

Nick D. Hopwood, PhD  
University Lecturer  
University of Cambridge

Thomas Huddle, MD, PhD  
Associate Professor  
University of Alabama at Birmingham

Geoffrey L. Hudson, DPhil  
Assistant Professor  
Northern Ontario School of Medicine

Frank G. Huisman, PhD  
Assistant Professor  
Universiteit Maastricht

David S. Jones, MD, PhD  
Clinical Fellow  
Harvard University

Kathleen W. Jones, PhD  
Associate Professor  
Virginia Tech

Andrew W. Keitt, PhD  
Assistant Professor  
University of Alabama at Birmingham

Richard C. Keller, PhD  
Assistant Professor  
University of Wisconsin-Madison

Matthew Newsom Kerr  
PhD Candidate  
University of Southern California

Sophie Kisting, MD  
Occupational and Environmental  
Health Research Unit  
University of Cape Town

Wendy Kline, PhD  
Assistant Professor  
University of Cincinnati

Gretchen M. Krueger, PhD  
Postdoctoral Fellow  
Johns Hopkins University

Howard I. Kushner, PhD  
Nat C. Robertson  
Distinguished Professor of  
Science & Society  
Emory University

Gerald Kutcher, PhD  
Dean's Professor  
Binghamton University

Maneesha Lal, PhD  
Assistant Professor  
Binghamton University

Judith Leavitt, PhD  
Ruth Bleier WARF Professor  
University of Wisconsin-Madison

Susan E. Lederer, PhD  
Associate Professor  
Yale University

Barron H. Lerner, MD, PhD  
Angelica Berrie Gold Foundation  
Associate Professor  
Columbia University

Beth Linker  
PhD Candidate  
Yale University

Carol Loar, PhD  
Assistant Professor  
University of South Carolina Upstate

Paul A. Lombardo, PhD, JD  
Associate Professor  
University of Virginia

Gretchen Long, PhD  
Assistant Professor  
Williams College

Kenneth M. Ludmerer, MD  
Professor  
Washington University in St. Louis

Margaret Marsh, PhD  
Dean, Arts and Sciences and  
Professor of History  
Rutgers University-Camden Campus

Russell C. Maulitz, MD, PhD  
Professor  
CHI Systems

Peter McCandless, PhD  
Distinguished Professor  
College of Charleston

Heather McHold, PhD  
Independent Scholar  
Northwestern University

Richard A. Meckel, PhD  
Associate Professor  
Brown University

Marcia C. Meldrum, PhD  
Historian and Co-Director  
John C. Liebeskind History of Pain Collection  
University of California, Los Angeles

Jonathan M. Metzl, MD, PhD  
Assistant Professor  
University of Michigan

Piers D. Mitchell, PhD  
Research Fellow  
University of London

Sarah Mitchell  
Instructor  
Virginia Tech

James Mohr, PhD  
College of Arts and Sciences  
Distinguished Professor  
University of Oregon

Ellen Singer More, PhD  
Professor  
University of Texas - Medical Branch

Brian Nance, PhD  
Associate Professor  
Coastal Carolina University

Ayesha Nathoo, BA (Hons), MA, MPhil  
PhD Candidate  
University of Cambridge

Raul Necochea  
PhD Candidate  
McGill University

Jennifer A. Nelson, PhD  
Assistant Professor  
University of Redlands

Christiane Nockels, MPhil, MA, PA-C, Lic L  
PhD Candidate  
Yale University

Stephen E. Novak, MA  
Head, Archives and Special Collections  
Columbia University

Ronald L. Numbers, PhD  
Hilldale and William Coleman Professor  
University of Wisconsin-Madison

Dan O'Connor, MA  
Visiting Research Fellow/PhD Student  
University of Wisconsin-Madison

Naoko Ono, MA  
Associate Professor  
Toyama University

Gerald M. Oppenheimer, PhD, MPH  
Professor  
Columbia University

Abena Dove Osseo-Asare  
PhD Candidate  
Harvard University

Randall Packard, PhD  
William H. Welch Professor  
Johns Hopkins University

Ishita Pande  
PhD Candidate  
Princeton University

John Parascandola, PhD  
Independent Scholar

Kim Pelis, PhD  
Assistant Professor  
Uniformed Services University

Tim L. Pennycuff, MLS  
Assistant Professor  
University of Alabama at Birmingham

Heather R. Perry  
PhD Candidate  
Indiana University

James A Pittman, Jr., MD  
Dean Emeritus  
University of Alabama at Birmingham

Dorothy Porter, PhD  
Professor  
University of California-San Francisco

Heather Munro Prescott, PhD  
Professor  
Central Connecticut State University

Elfed Huw Price, BSc, MSc  
PhD Candidate  
University of Oxford

Margaret Puskar-Pasewicz, PhD  
Assistant Professor  
College Misericordia

Sean M. Quinlan, PhD  
Assistant Professor  
University of Idaho

Stephen Rachman, PhD  
Associate Professor  
Michigan State University

Stacey L. Randall  
PhD Candidate  
Northern Illinois University

P. Preston Reynolds, MD, PhD  
Visiting Scholar  
National Library of Medicine - NIH

Ruth Rogaski, PhD  
Associate Professor  
Vanderbilt University

Robin Rohrer, PhD  
Professor  
Seton Hill University

Sally D. Romano  
MD/PhD Candidate  
Yale University

Wanda Ronner, MD  
Clinical Assistant Professor  
Pennsylvania Hospital

Stefanie Rookis, MA  
Assistant Professor  
University of Alabama at Birmingham

David Rosner, PhD  
Professor  
Columbia University

Michael Sappol, PhD  
Historian  
National Library of Medicine

Todd L. Savitt, PhD  
Professor  
East Carolina University

Walton O. Schalick, III, MD, PhD  
Assistant Professor  
Washington University in St. Louis

Jole R. Shackelford, PhD  
Assistant Professor  
University of Minnesota

Miri Shefer, PhD  
Lecturer  
Tel Aviv University

Eva Ahren Snickare, PhD  
Senior Curator and Head  
Research Department  
Nobel Museum

Rosemary Stevens, PhD, MPH  
Professor Emerita  
University of Pennsylvania

Colin L Talley, PhD  
Associate Research Scholar  
Columbia University

John Anthony Tercier, MD, PhD  
Postdoctoral Fellow  
University of California San Francisco

Samuel S. Thomas, PhD  
Assistant Professor  
Wittenberg University

Carsten Timmermann, PhD  
Wellcome Research Associate  
University of Manchester

Elizabeth Toon, PhD  
Wellcome Research Associate  
University of Manchester

Noemi R Tousignant  
PhD Candidate  
McGill University

Arleen Tuchman, PhD  
Associate Professor  
Vanderbilt University



Maarten Ultee, PhD

Professor

University of Alabama

Conevery Bolton Valencius, PhD

Fellow/Independent Scholar

Dibner Institute for the History of  
Science and Technology

Keith Wailoo, PhD

Professor

Rutgers University

Naoko Wake, PhD

Visiting Scholar

Indiana University

Karen L. Walloch

PhD Candidate

University of Wisconsin-Madison

John Harley Warner, PhD

Professor

Yale University

Patrick Warren

MA Candidate

University of Nevada-Reno

Elizabeth Watkins, PhD

Associate Professor

University of California, San Francisco

Bill Weaver, PhD

Associate Professor and Assistant Dean

University of Alabama at Birmingham

Sarah B. Webber, MA

PhD Candidate

University of Nebraska Medical Center

Dora B. Weiner, PhD

Professor

University of California-Los Angeles

Debbie Weinstein, PhD

Mellon Postdoctoral Fellow

Brandeis University

George Weisz, PhD

Professor

McGill University

Parnel Wickham, PhD

Professor

Dowling College

Adrian F. Wilson

Lecturer

University of Leeds

Daniel Wilson, PhD

Professor

Muhlenberg College

Philip K. Wilson, PhD

Associate Professor

Pennsylvania State University

**ANESTHESIA HISTORY ASSOCIATION**

**WEDNESDAY, APRIL 6**

Council Meeting  
6:00pm

Opening Reception, Birmingham  
Museum of Art, 8th Avenue Lobby  
5:00 - 8:00pm

**THURSDAY, APRIL 7**

All paper sessions will be held at the  
Medical Forum, 3rd floor, Rooms H and I

Registration and Continental Breakfast  
7:00 - 7:45am

Opening Plenary Lecture  
8:00 - 8:50am  
*1847 - John Snow's Annus Mirabilis, or  
Year of Consilience?*  
Peter Vinten-Johansen, MD

Concurrent Sessions  
9:00am - 12:00pm

Luncheon Plenary Session  
12:00 - 1:45pm  
*Anesthesia in Birmingham since the 1930s*  
Alfred Habeeb, MD

*Origins and Growth of the Medical  
Center in Birmingham*  
James A. Pittman, Jr., MD

Sessions  
2:00 - 3:30pm

**Archivists and Librarians in the  
History of Health Sciences  
(ALHHS)**

**WEDNESDAY, APRIL 6**

ALHHS Steering Committee Meeting  
4:00 - 6:00pm

ALHHS Dinner  
6:30 - 8:30pm

**THURSDAY, APRIL 7**

Bus departs Sheraton for  
UAB Lister Hill Library  
8:00am

Continental Breakfast  
8:00 - 9:00am

Program  
9:00am - 12:00pm

Lunch  
12:00 - 1:00pm

Business Meeting  
1:00 - 2:00pm

Tours of UAB Historical Collections  
2:00pm

Bus departs for Sheraton  
3:00 - 4:00pm

**Medical Museums Association  
(MeMA)**

**WEDNESDAY, APRIL 6**

Dinner with ALHHS  
6:30 - 8:30pm

**THURSDAY, APRIL 7**

Bus departs Sheraton for  
UAB Lister Hill Library  
8:00am

Continental Breakfast  
8:00 - 9:00am

Program, Tributes, and Discussion  
*Planning For or Just Surviving Institutional  
Change: Tales from the Front*  
9:00am - 12:00pm

Business Meeting and Lunch  
12:00 - 1:30pm

Tour of the Alabama Museum of the  
Health Sciences, UAB Lister Hill Library  
1:30pm

Tour of the Dr. Dennis G. Pappas, Sr.  
Private Collection  
2:30

Bus departs for Sheraton  
3:30 - 4:00pm

**SIGERIST CIRCLE**

**THURSDAY, APRIL 7**

*Civil Rights and Health Care*  
2:00 - 4:30pm

*Who Did What?: Health Care Activism  
in the American Civil Rights Era*  
Susan Reverby, Chair, Women's Studies,  
Wellesley College

*Striking a Blow at Medical School  
Segregation: Edith Irby Jones Goes to  
Medical School*  
Vanessa Gamble, Director, Tuskegee  
University National Center for Bioethics  
and Health Care

*The Good Doctors: Race and Health  
Care During the Civil Rights Era*  
John Dittmer, Crandell Professor of  
History Emeritus, DePauw University

*The Health New Left Confronts Race and  
Medicine in Search for Authenticity*  
Naomi Rogers  
Associate Professor, History of  
Medicine and Women's and  
Gender Studies, Yale University

Reception  
4:30 - 5:30pm

Business Meeting  
5:30 - 6:30pm

All held in Medical Forum C, 2nd floor

## FUTURE AAHM MEETINGS

May 4 -7, 2006  
Halifax, Nova Scotia  
Local Arrangements Chair:  
Peter Twohig  
peter.twohig@SMU.CA

May 3 - 6, 2007  
Montreal, Quebec  
Local Arrangements Chair:  
George Weisz  
mdwe@musica.mcgill.ca



David Moore, MD, makes rounds in his buggy in Blount County, Alabama, 1913.

## Boydell & Brewer

### Wade Hampton Frost, Pioneer Epidemiologist 1880-1938: Up to the Mountain

THOMAS M. DANIEL

A biography of a seminal figure in the fight against tuberculosis and other public health diseases.

25 b/w illus, 264pp, 1 58046 177 8, \$45.00, Available Now  
University of Rochester Press

### Rockefeller Money, the Laboratory and Medicine in Edinburgh 1919-1920: New Culture in an Old Country

CHRISTOPHER LAWRENCE

This book examines the Rockefeller Foundation's attempts to introduce the laboratory sciences, particularly biochemistry, into the Edinburgh medical world of the 1920s. c. 256pp, 1 58046 195 6, \$75.00, August 2005

University of Rochester Press

### The Iconography of Sir Isaac Newton to 1800 MILO KEYNES

Catalogue and iconography of the extraordinary wealth of images of Sir Isaac Newton, both before and after his death.

24 color, 110 b/w illus; 184pp, 1 84383 133 3, \$70.00  
February 2005

### Food Poisoning, Politics and Policy: Typhoid in Britain, 1963-64

DAVID F. SMITH, H. LESLEY DIACK, T. HUGH PENNINGTON  
Study of the 1963/4 typhoid outbreak, highlighting issues and debates which are strikingly relevant today.

352pp, 1 84383 138 4, \$85.00, July 2005

### The Black Death 1346-1353: The Complete History

OLE J. BENEDICTOW

"[This] magisterial account mixes demographic research, meticulous reading of the chronicles and modern bacteriology." THE GUARDIAN

1 color, 2 b/w illus, 456pp, 0 85115 943 5, \$50.00  
Available Now

Rochester, NY & Woodbridge, Suffolk  
www.boydellandbrewer.com

# NORTH CAROLINA

➤ PLEASE VISIT OUR DISPLAY ◀

## STUDIES IN SOCIAL MEDICINE

### DOCTORING THE SOUTH

Southern Physicians and Everyday Medicine  
in the Mid-Nineteenth Century

**Steven M. Stowe**

392 pp. \$45.00 cloth

### PROZAC AS A WAY OF LIFE

**Carl Elliott and Tod Chambers, Editors**

224 pp. \$39.95 cloth / \$19.95 paper

### PHARMACOPOLITICS

Drug Regulation in the United States and Germany

**Arthur A. Daemrich**

224 pp. \$34.95 cloth

—NEW IN PAPERBACK—

### PROTECTING AMERICA'S HEALTH

The FDA, Business, and One Hundred Years of Regulation

**Phillip J. Hilts**

*Los Angeles Times Book Prize for Science and Technology*

*A New York Times Book Review Notable Book*

424 pp., 20 illus. \$19.95 paper

### CHOICE AND COERCION

Birth Control, Sterilization, and Abortion  
in Public Health and Welfare

**Johanna Schoen**

352 pp. \$59.95 cloth / \$19.95 paper

*Gender and American Culture*

### THE ABORTION RIGHTS CONTROVERSY IN AMERICA

A Legal Reader

**N. E. H. Hull, William James Hoffer,  
and Peter Charles Hoffer, Editors**

352 pp. \$59.95 cloth / \$24.95 paper

Visit [www.uncpress.unc.edu](http://www.uncpress.unc.edu) to sign up for monthly  
e-alerts about our new books and special web offers.

The University of North Carolina Press

800-848-6224 | [www.uncpress.unc.edu](http://www.uncpress.unc.edu)

## MEDICAL BOOKS

**Rebecca Hardie**

Rare Books

28 Pavilion Terrace

Wood Lane

London

W12 0HT

United Kingdom

Tel/Fax: + 44 20 8749 3675

E-mail:

[rebecca.hardie@btopenworld.com](mailto:rebecca.hardie@btopenworld.com)

Catalogues issued.  
Individual books,  
or collections, wanted.

All periods and fields of medicine,  
with a particular emphasis on  
women's and children's medicine  
and public health

Please come and visit my stand  
in the AAHM book exhibit

## Seeking Medical Historians with Policy-Relevant Projects

Each year, the Investigator Awards in Health Policy Research of The Robert Wood Johnson Foundation (RWJF) awards grants of up to \$275,000 to investigators for broad, innovative studies of the most challenging health, health care, and health policy issues facing America.

Over the past 12 years, the Foundation has invested more than \$25 million in such research. Historians who have received awards include: Peter Baldwin, Amy Fairchild, Vanessa Gamble, Beatrix Hoffman, Barron Lerner, Gerald Markowitz, David Rosner, David Rothman, Sheila Rothman, Rosemary Stevens, and Keith Wailoo, among others. They have tackled such topics as medical specialization, insurance, race and American medicine, the treatment of pain, health care rights, public health strategies and reporting, living organ donors, and the influence of famous patients on policymaking.

If you have a project idea that holds promise for enhancing our understanding of significant health-related problems and contributing to the development of sound health or health care policies, we encourage you to apply.

The next deadline for 4-page letters of intent will be April 2006. For more information about the program and its funding opportunities, please visit [www.ihhpcpar.rutgers.edu/rwjf](http://www.ihhpcpar.rutgers.edu/rwjf) or contact:

Lynn Rogut, Deputy Director  
Investigator Awards in Health Policy Research  
Institute for Health, Health Care Policy,  
and Aging Research  
E-mail: [depdir@ifh.rutgers.edu](mailto:depdir@ifh.rutgers.edu)

Making the world better one book at a time.



### BEASTS OF THE EARTH

Animals, Humans, and Disease  
E. Fuller Torrey, M.D., and Robert H. Yolken, M.D.  
208 PAGES • 1 TABLE • 1 FIGURE  
CLOTH \$23.95 • 0-8135-3571-9



### NATURE'S BODY

Gender in the Making of Modern Science  
Londa Schiebinger

With a new preface by the author  
WINNER OF THE LUDWIG FLECK BOOK PRIZE, SOCIETY FOR  
SOCIAL STUDIES OF SCIENCE  
312 PAGES • 39 B&W ILLUSTRATIONS  
PAPER \$22.95 • 0-8135-3531-X



### PAIN AND PROFITS

The History of the Headache and  
Its Remedies in America

Jan F. McTavish  
240 PAGES • 5 ILLUSTRATIONS  
PAPER \$23.95 • 0-8135-3441-0



### THE STORY OF V

A Natural History of Female Sexuality  
Catherine Blackledge

336 PAGES • 61 B&W ILLUSTRATIONS  
CLOTH \$24.95 • 0-8135-3455-0



### BULLETS AND BACILLI

The Spanish-American War and  
Military Medicine

Vincent J. Cirillo  
256 PAGES • 11 B&W ILLUSTRATIONS  
CLOTH \$55.00 • 0-8135-3339-2

### A VITAL FORCE

Women in American Homeopathy  
Anne Taylor Kirschmann

240 PAGES • PAPER \$23.95 • 0-8135-3320-1

### THE MEDICAL DELIVERY BUSINESS

Health Reform, Childbirth, and the  
Economic Order

Barbara Bridgman Perkins  
256 PAGES  
CLOTH \$42.95 • 0-8135-3328-7

### POLICY CHALLENGES IN MODERN HEALTH CARE

Edited by David Mechanic, Lynn B. Rogut, David C.  
Colby, and James R. Knickman

288 PAGES • 10 TABLES  
PAPER \$23.95 • 0-8135-3578-6 • AVAILABLE IN NOV 2005

Visit us at our table.



RUTGERS UNIVERSITY PRESS

To order, call 800-446-3323 or visit [rutgerspress.rutgers.edu](http://rutgerspress.rutgers.edu)

**THE STORY OF A**  
**WOMAN'S BODY**  
 Over the past 12 years, the author has written a book that is both a history and a personal story. The book is a journey of discovery, from the author's own experiences to the broader context of women's health care. It is a story of resilience and the fight for equality.

**THE MEDICAL DELIVERY BUSINESS**  
 This book explores the complex world of medical delivery, from the perspective of the patient to the provider. It discusses the challenges of navigating the healthcare system and the importance of patient advocacy.

**IF YOU HAVEN'T HAD IT YET**  
 This book provides a comprehensive guide to various health topics, offering practical advice and information for readers who may not have had certain experiences yet. It is a resource for anyone looking to take control of their health.

**THE POLICY DILEMMA**  
 This book delves into the policy issues surrounding healthcare, examining the impact of government decisions on the lives of ordinary people. It is a call to action for readers to engage in the political process.

Visit us at [www.rutgers.edu](http://www.rutgers.edu)  
**RUTGERS UNIVERSITY PRESS**